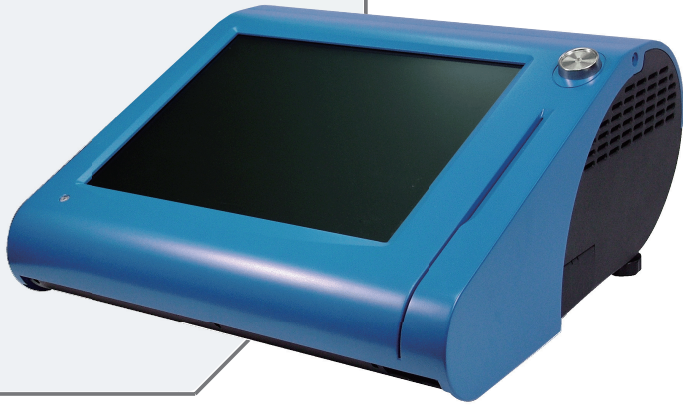


PS3100

Quick Reference Guide



Ver. Q5

All Rights Reserved. Copyright 2014

Packing Checklist

If you discover any item below damaged or lost, please contact your vendor.

<input checked="" type="checkbox"/> PS3100	X 1
<input checked="" type="checkbox"/> This Quick Reference Guide	X 1
<input checked="" type="checkbox"/> AC Power Adaptor	X 1
<input checked="" type="checkbox"/> Driver CD	X 1
<input checked="" type="checkbox"/> Accessories Installation Guide	X 1

Specifications

System

CPU Support	Intel® ATOM N270 CPU
Memory Support	1 x DDR2 SO-DIMM Slot, 512MB DDR2 SO-DIMM (up to 1GB)
Core Logic	Intel® 945GSE + ICH7M
Network	10/100/1000 Base-T Fast Ethernet
Power Supply	120 Watt power adapter
System Weight	4.5 kg (Fanless)
Dimension (WxHxD)	300 x 299 x 135 mm (11.81" x 11.77" x 5.31")
O.S. Support	Windows XP/ XPE, WEPOS, POSReady 2009

Storage

HDD	1 x 2.5" SATA HDD (standard 160GB)
CF	Bootable Compact Flash slot for CF type I/II storage

I/O Ports

USB	4 x USB 2.0 port/ 1 x USB 2.0 on side bezel
Serial Port	3 x DB-9 (COM1/2/4), 1 x RJ45 (COM3), +5V/12V selectable (COM1~3)
PS/2	1 x PS/2 ports (default at keyboard)
LAN	1 x 10/100/1000 Mbps
VGA	1 x DB-15 VGA interface
Audio	1 x 2W speaker
Cash Drawer	1 x RJ11 Cash Drawer port (12V/24V)
Printer	2" or 3" easy loading thermal printer with auto cutter

Display

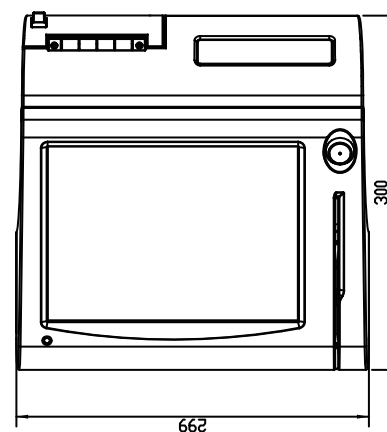
LCD	10.4" TFT LCD
Max. Resolution	1024 x 768/ 800 x 600
Brightness	300/ 230 cd/m ²
Touch Screen	5-wire analog resistive
Viewing Angle	0 ~ 65°

Environment

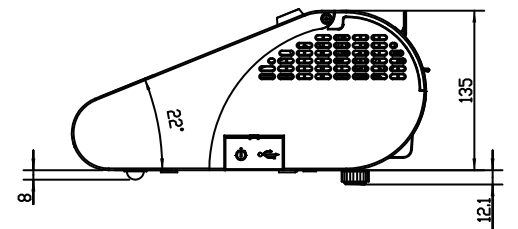
EMC & Safety	CE, FCC, cUL, CB
Temperature	Operating: 0 ~ 35°C; Storage: -20 ~ 60°C
Humidity	20 ~ 90%

System View

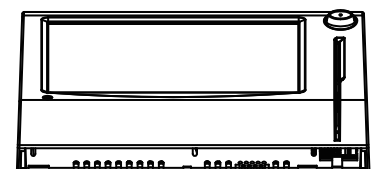
Front View



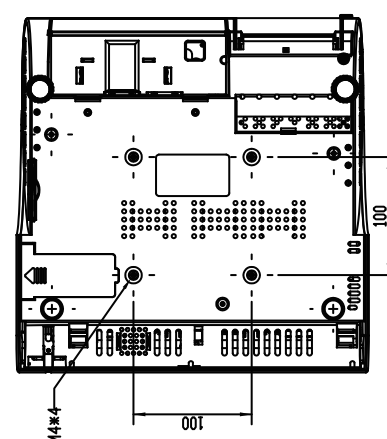
Side View



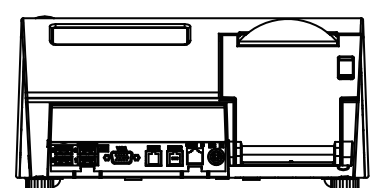
Top View



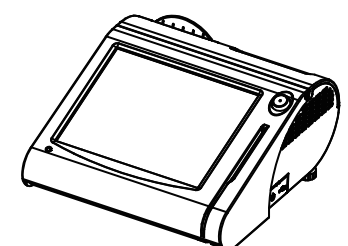
Bottom View



Rear View



Quarter View



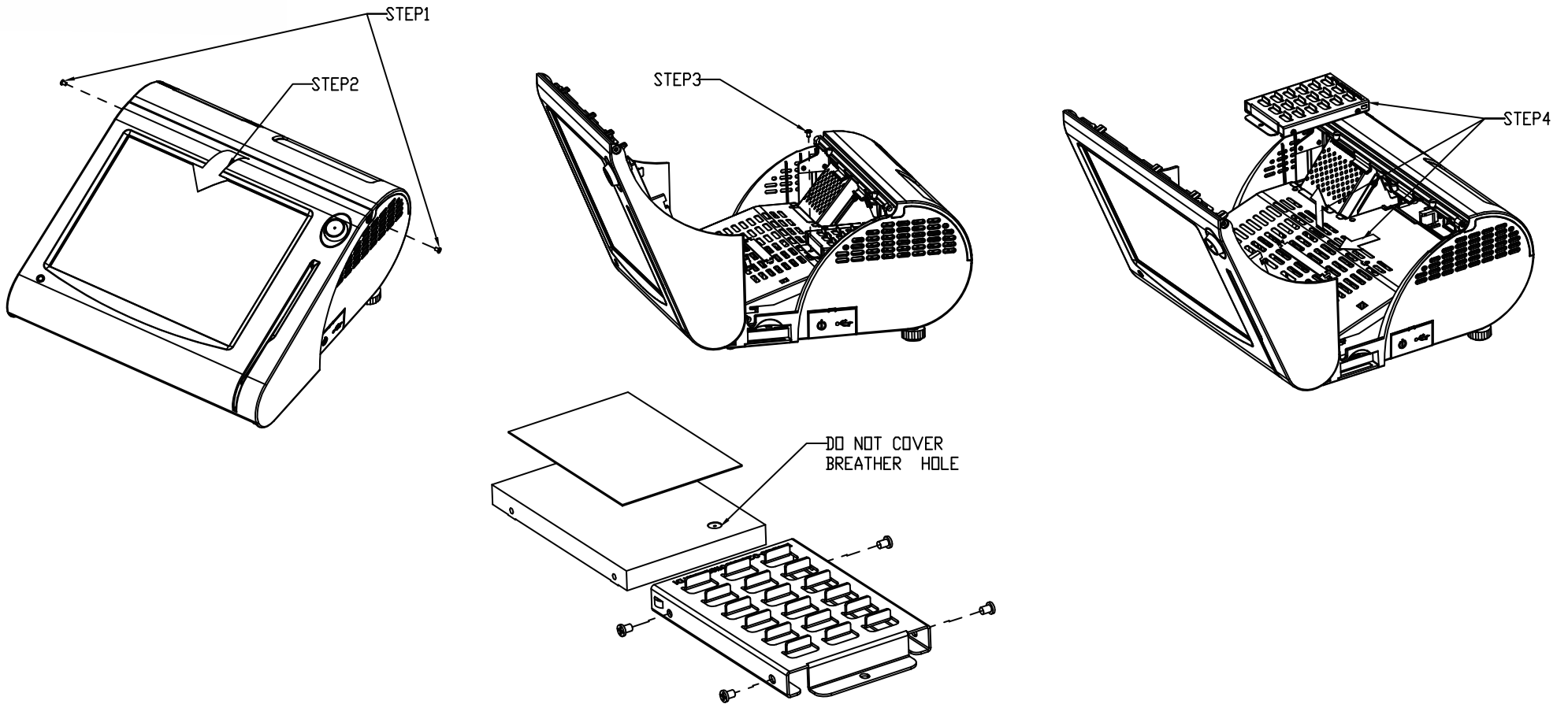
Unit: mm

PS3100

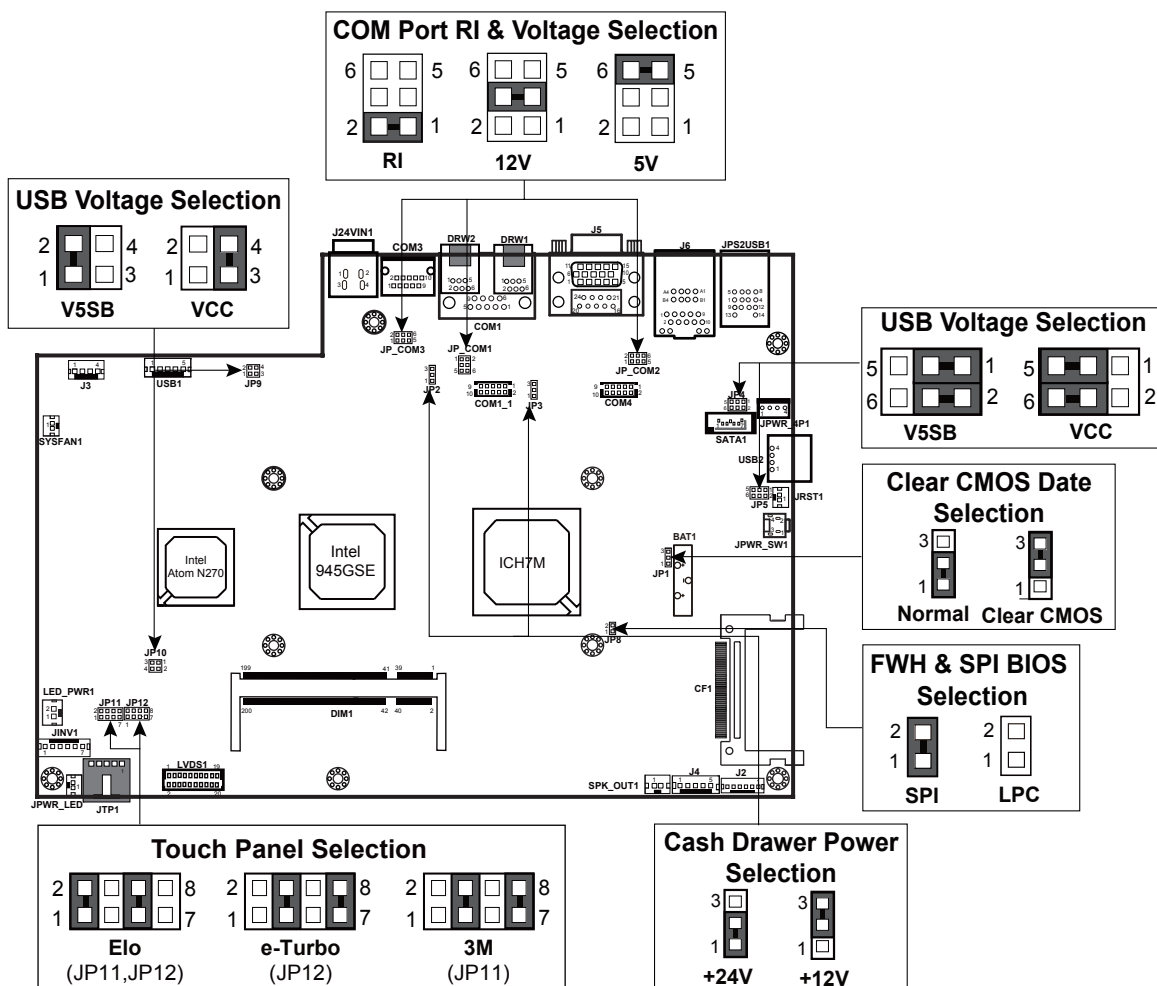
The One-of-a-kind Highly Integrated Fanless 10.4" POS Terminal

Easy Maintenance

HDD Maintenance



Jumper Setting



Safety Precaution

The following messages are reminders for safety on how to protect your systems from damages and to extend a long life of the system.

- 1. Check the Cable Voltage**
 - Make sure the range of operating voltage between AC 100V ~ 240V. Otherwise, the system could be damaged.
- 2. Environmental Conditions**
 - Place your PS3100 on a sturdy, level surface. Be sure to allow enough space to have easy access around the system.
 - Avoid extremely hot or cold place to install the system.
 - Avoid exposure to sunlight for a long period of time or in an airtight space.
 - Avoid the system from any heating device or using it outdoors in a cold winter day.
 - Bear in mind that the operating ambient temperature is from 0 ~ 35°C (32 ~ 95°F).
 - Avoid moving the system rapidly from a hot place to a cold place and vice versa because condensation may come from inside of the system.
 - Place PS3100 in strong vibration(s) may cause hard disk failure.
 - Don't place the system close to any radio active device in case of signal interference.
- 3. Handling**
 - If the system isn't a full system in DOS mode, adjust BIOS setting as the following instruction.
Advanced Chipset Feature => Boot display => choose "LFP"
Avoid putting heavy objects on top of the system.
 - Don't turn the system upside down. This may cause the hard drive to malfunction.
 - Don't allow foreign objects to fall into this product.
 - If water or other liquid spills into this product, unplug the power cord immediately.
- 4. Good Care**
 - When the outside of the case is stained, remove the stain with a neutral washing agent with a dry cloth.
 - Never use strong agents such as benzene and thinner to clean the system.
If heavy stains are present, moisten a cloth with diluted neutral washing agent or with alcohol and then wipe thoroughly with a dry cloth.
 - If dust has been accumulated on the outside, remove it by using a special made vacuum cleaner for computers.
 - Don't contact the surface of capacitive touch before entering your operation system, or capacitive touch may have position problems for electrostatics interface.
 - Don't exchange the M/B battery by yourself or serious damage may incur.

CAUTION! Danger of explosion if battery is incorrectly replaced. Replace only with the same or equivalent type recommended by the manufacturer. Dispose of used batteries according to the manufacturer's instructions.

WARNING! Some internal parts of the system may have high electrical voltage. And therefore we strongly recommend that qualified engineers can open and disassemble the system. The LCD and Touchscreen are easily breakable, please handle them with extra care.