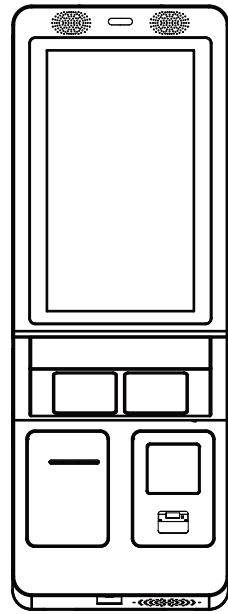


KS-1132

Quick Reference Guide



Entry Level System

Ver. Q1

All Rights Reserved. Copyright 2019

Packing Checklist

If you discover any item below damaged or lost, please contact your vendor immediately.

- | | |
|--|----|
| <input checked="" type="checkbox"/> KS-1132 | x1 |
| <input checked="" type="checkbox"/> This Quick Reference Guide | x1 |
| <input checked="" type="checkbox"/> AC Power Adaptor | x1 |
| <input checked="" type="checkbox"/> Manual/Driver DVD | x1 |
| <input checked="" type="checkbox"/> Door Key | x2 |

KS-1132

Specifications

System

CPU	Intel® Celeron J1900
Memory Support	DDR3L SO-DIMM memory (up to 8GB)
HDD	1 x 500GB 2.5" SATA HDD
Network	Gigabit 10/100/1000 Base-T Fast Ethernet
Power Supply	1 x 12V power supply
System Weight	37kg (without Free Stand) / 72.34kg (with Free Stand)
Dimensions (WxHxD)	395 x 1106 x 175 mm (without Free Stand) 580 x 1705 x 600 mm (with Free Stand)
Operating System	Windows 10 / Windows 7 / POSReady 7

Operating Display

LCD	21.5" TFT LCD
Max. Resolution	1920 x 1080
Brightness	250 cd/m ²
Touchscreen	Projected capacitive touch
View Angle	Horizontal: (R) 89° / (L) 89°, Vertical: (U) 89° / (L) 89°

Optional Accessories

Thermal Printer	2"/3" standalone thermal printer for 58/80mm paper roll
Barcode Scanner	1D/2D Barcode Scanner
MSR/IC Card Reader	RS232 interface of the hybrid card reader intended to read ISO / JIS II format magnetic card and read/write ISO7816 / EMV / memory chip smart card
Face Camera	16:9 2.1M-Pixels Full HD H.264 PC camera
Credit Card	Based on customer requirements
e-Payment	Based on customer requirements
RFID Reader	Read/write ISO 14443A Mifare

Environment

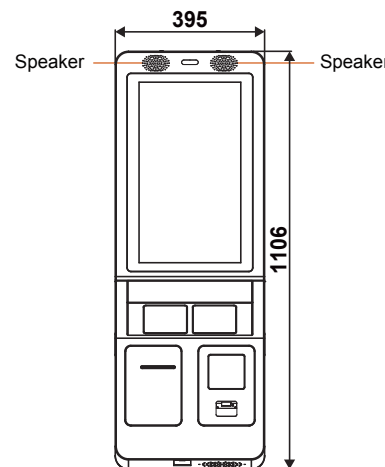
Temperature	Operating: 0°C ~ 35°C (32°F ~ 95°F) Storage: -5°C ~ 60°C (23°F ~ 140°F)
Humidity	20% ~ 85% (no condensation)
EMC & Safety	CE / FCC

KS-1132

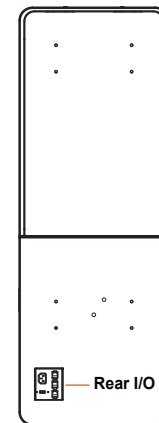
System View

Unit: mm

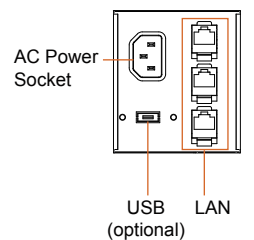
Front View



Rear View



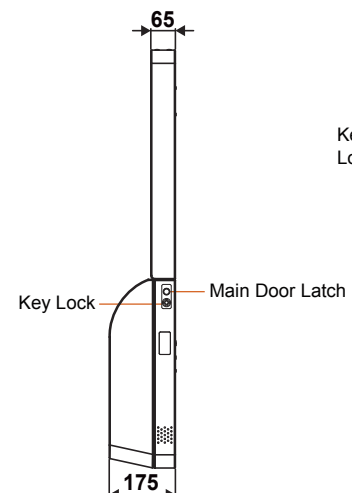
Rear I/O View



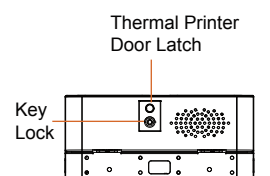
Left Side View



Right Side View



Bottom View



Removing Front Panel

Step 1. Press the main door latch to unlock the system front door.

Step 2. Gently pull down the front door and remove the two screws as shown. The door latch can be then detached.

Step 3. From the same location in Step 2, remove the 6 screw nuts as shown:

Step 4. Lift up to remove the panel from the system.

Removing Stand

Step 1. Press the main door latch to unlock the system front door.

Step 2. Gently pull down the front door and remove the 8 screw nuts as shown:

Step 3. Close the system front door.

Step 4. Lift up to detach the system from the Stand.

Installing Wall Mount

Step 1. Precisely drill 8 screw holes on the wall according to the dimensions and distances as specified for the installation of the provided 8 x sleeve anchors (1/4") in the next step.

Unit: mm

Step 2. Align the screw holes on both sides of the provide wall mount brackets with the drilled holes on the wall, and install the eight sleeve anchors to secure the two wall mount brackets firmly.

Step 3. Attach the system over the wall (Diagram 1) and precisely align and insert the 8 screw caps located on the rear of the system into the corresponding mounting holes on the installed wall mount brackets (Diagram 2).

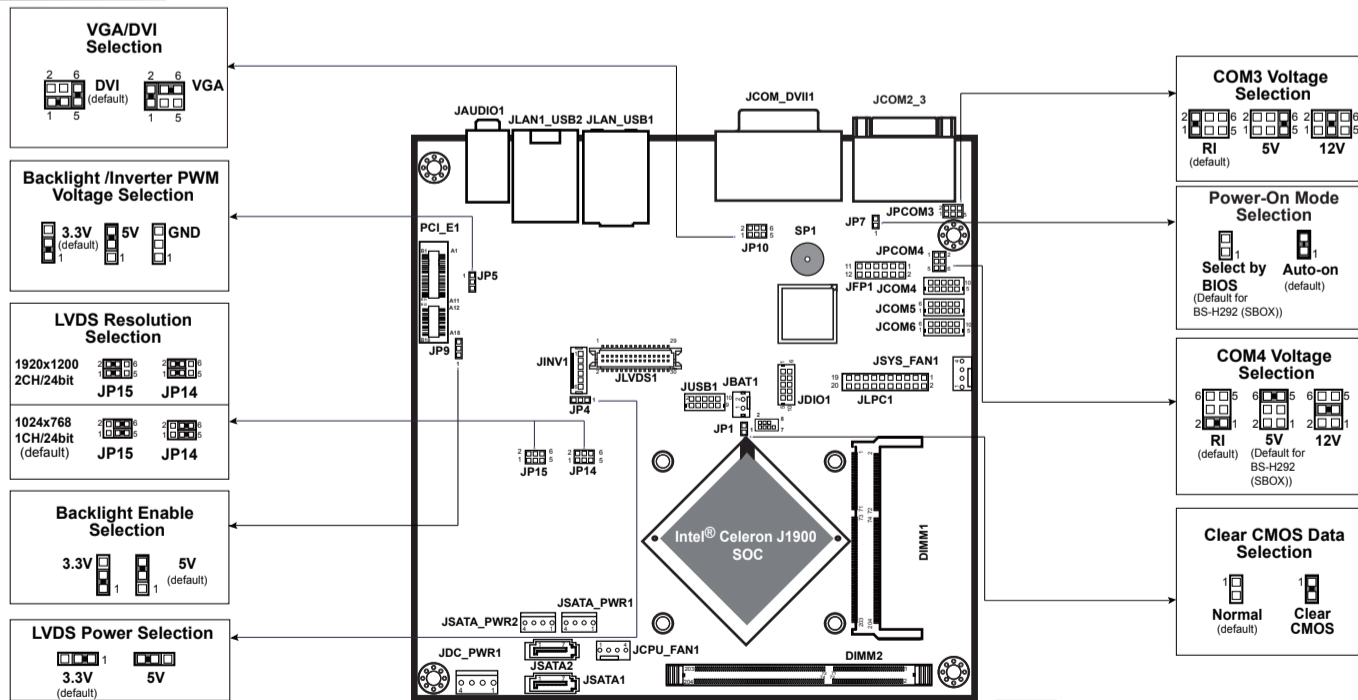
Step 4. Press the main door latch to release the system front door.

Step 5. Fasten the screw (M4x12L) provided into the location to secure firmly.

Step 6. Close the system front door to complete the installation.

Jumper Setting

M/B: BM-0962



CAUTION! Danger of explosion may occur if the battery is replaced incorrectly. Replace batteries only with the same or equivalent type recommended by the manufacturer. Dispose the used batteries according to the manufacturer's instructions.

Safety Precaution

The following messages are reminders for safety on how to protect your system from damages and to extend a long life of the system.

1. Check the Cable Voltage

- The range of operating voltage should be between DC 9V and 36V. Otherwise, the system could be damaged.

2. Environmental Conditions

- Place your KS-1132 on a sturdy, level surface. Be sure to allow enough space to have easy access around the system.
- Avoid extremely hot or cold place to install the system.
- Avoid exposure to sunlight for a long period of time or in an airtight space.
- Avoid the system from any heating device or using KS-1132 when it's been left outdoors in a cold winter day.
- Bear in mind that the operating ambient temperature is from 5°C ~ 35°C (41°F ~ 95°F).
- Avoid moving the system rapidly from a hot place to a cold place and vice versa because condensation may come from inside of the system.
- Placing KS-1132 in strong vibrations may cause hard disk failure.
- Don't place the system close to any radio-active device in case of signal interference.

3. Handling

- Avoid putting heavy objects on top of the system.

- Do not turn the system upside down. This may cause the hard drive to mal-function.
- If water or other liquid spills into this product, unplug the power cord immediately.

4. Good Care

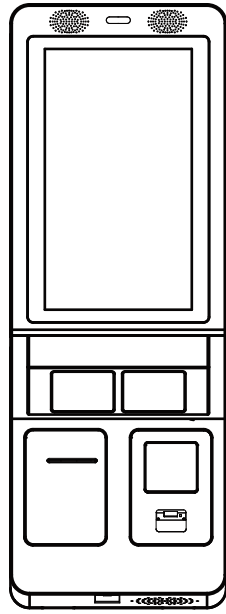
- When the outside of the case is stained, remove the stain with a neutral washing agent with a dry cloth.
- Never use strong agents such as benzene and thinner to clean the system.
- If heavy stains are present, moisten a cloth with diluted neutral washing agent or with alcohol and then wipe thoroughly with a dry cloth.
- If dust has been accumulated on the outside, remove it by using a special made vacuum cleaner for computers.

CAUTION! Danger of explosion if battery is incorrectly replaced. Replace only with the same or equivalent type recommended by the manufacturer. Dispose of used batteries according to the manufacturer's instructions.

WARNING! Some internal parts of the system may have high electrical voltage. And therefore we strongly recommend that qualified engineers can open and disassemble the system. Please handle LCD and Touchscreen with extra care as they are easily breakable.

KS-1132

Quick Reference Guide



High-End Level System

Ver. Q1

All Rights Reserved. Copyright 2019

Packing Checklist

If you discover any item below damaged or lost, please contact your vendor immediately.

- | | |
|--|----|
| <input checked="" type="checkbox"/> KS-1132 | x1 |
| <input checked="" type="checkbox"/> This Quick Reference Guide | x1 |
| <input checked="" type="checkbox"/> AC Power Adaptor | x1 |
| <input checked="" type="checkbox"/> Manual/Driver DVD | x1 |
| <input checked="" type="checkbox"/> Door Key | x2 |

KS-1132

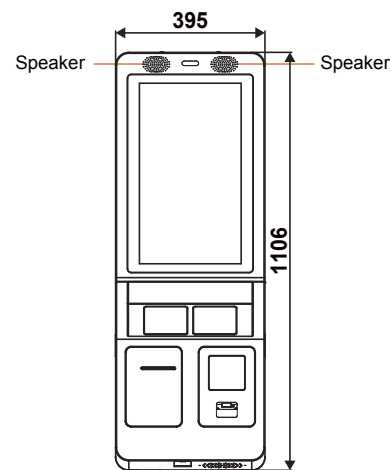
Specifications

System	
CPU	Intel® 7th Gen. Core™ i7-7700T / i5-7500T / i3-7101TE Intel® Celeron G3930TE
Memory Support	DDR4 memory (up to 16GB)
HDD	1 x 500GB 2.5" SATA HDD
Network	Gigabit 10/100/1000 Base-T Fast Ethernet
Power Supply	1 x 12V power supply
Expansion Bus	1 x PCIe(x16) slot (optional) / 1 xm.2 (2242-D2-M)
System Weight	37kg (without Free Stand) / 72.34kg (with Free Stand)
Dimensions (WxHxD)	395 x 1106 x 175 mm (without Free Stand) 580 x 1705 x 600 mm (with Free Stand)
Operating System	Windows 10 / Windows 7 / POSReady 7
Operating Display	
LCD	21.5" TFT LCD
Max. Resolution	1920 x 1080
Brightness	250 cd/m ²
Touchscreen	Projected capacitive touch
View Angle	Horizontal: (R) 89° / (L) 89°, Vertical: (U) 89° / (L) 89°
Optional Accessories	
Thermal Printer	2" / 3" Standalone thermal printer for 58/80mm paper roll
Barcode Scanner	1D/2D Barcode Scanner
MSR/IC Card Reader	RS232 interface of the hybrid card reader intended to read ISO / JIS II format magnetic card and read/write ISO7816 / EMV / memory chip smart card
Face Camera	16:9 2.1M-Pixels Full HD H.264 PC camera
Credit Card Reader & e-Payment	Based on customer requirements
RFID Reader	Read/write ISO 14443A Mifare
Environment	
Temperature	Operating: 0°C ~ 35°C (32°F ~ 95°F) Storage: -5°C ~ 60°C (23°F ~ 140°F)
Humidity	20% ~ 85% (no condensation)
EMC & Safety	CE / FCC

KS-1132

System View

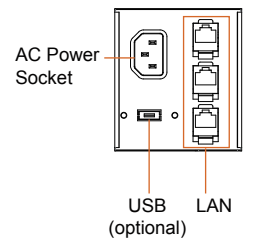
Front View



Rear View



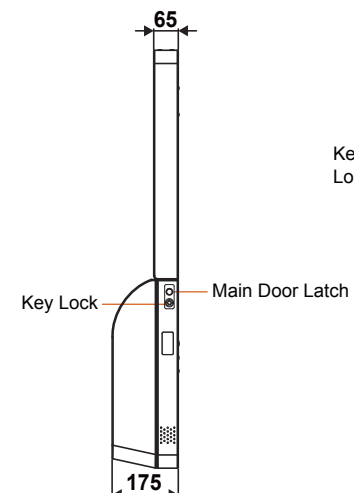
Rear I/O View



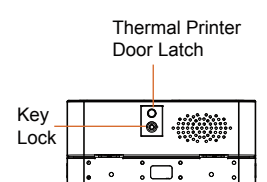
Right Side View



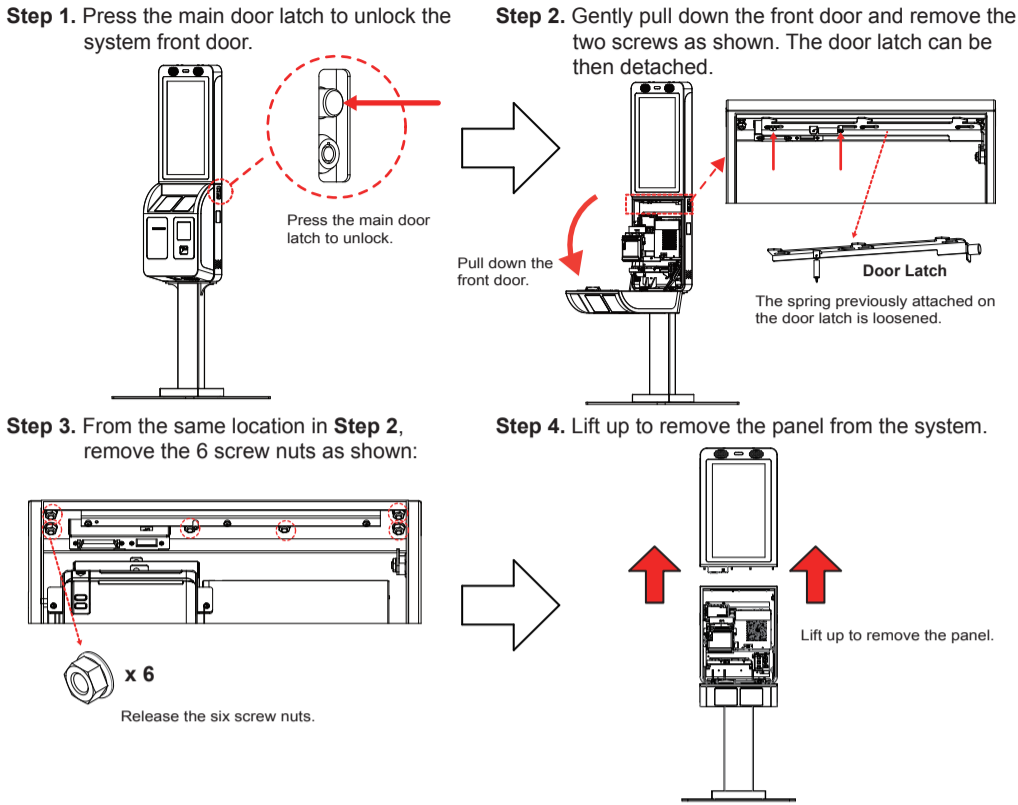
Left Side View



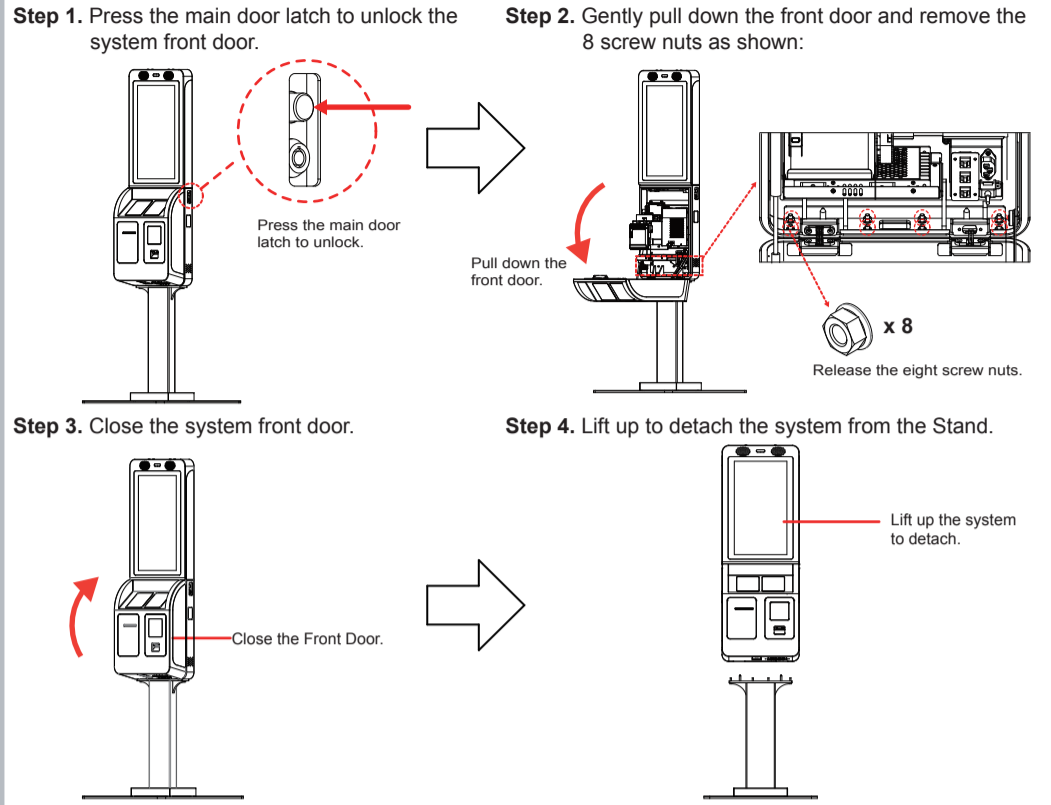
Bottom View



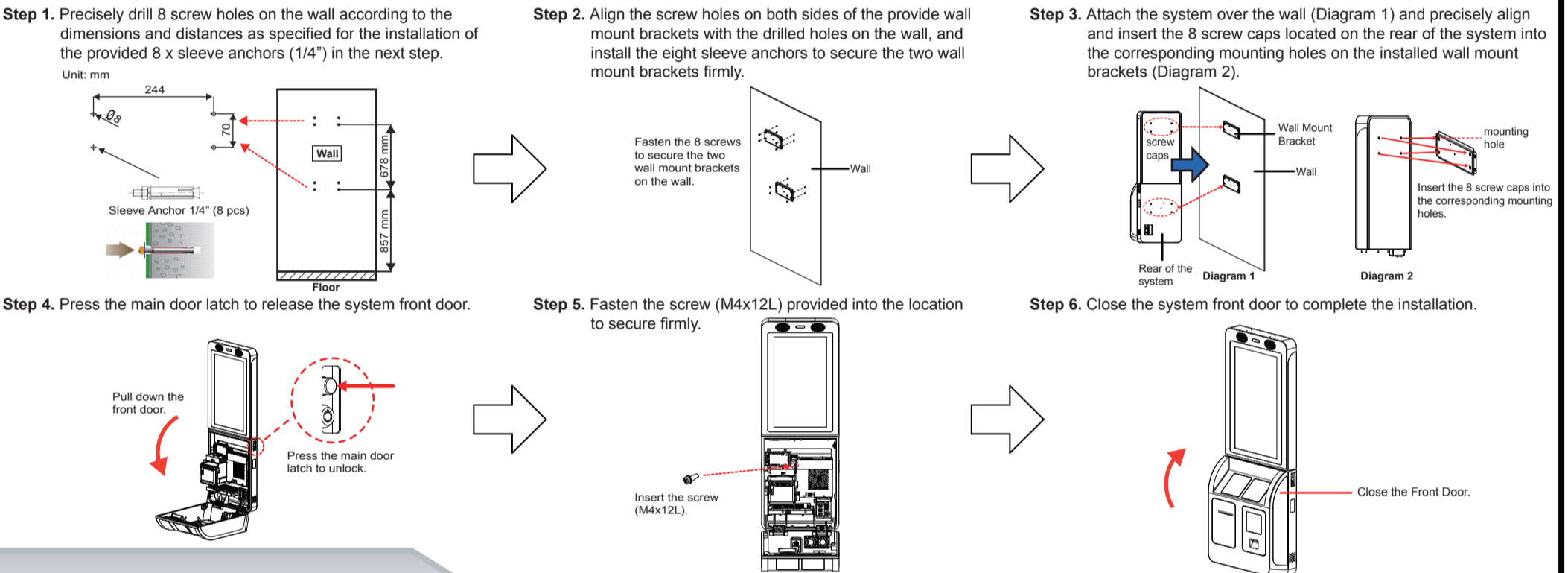
Removing Front Panel



Removing Stand

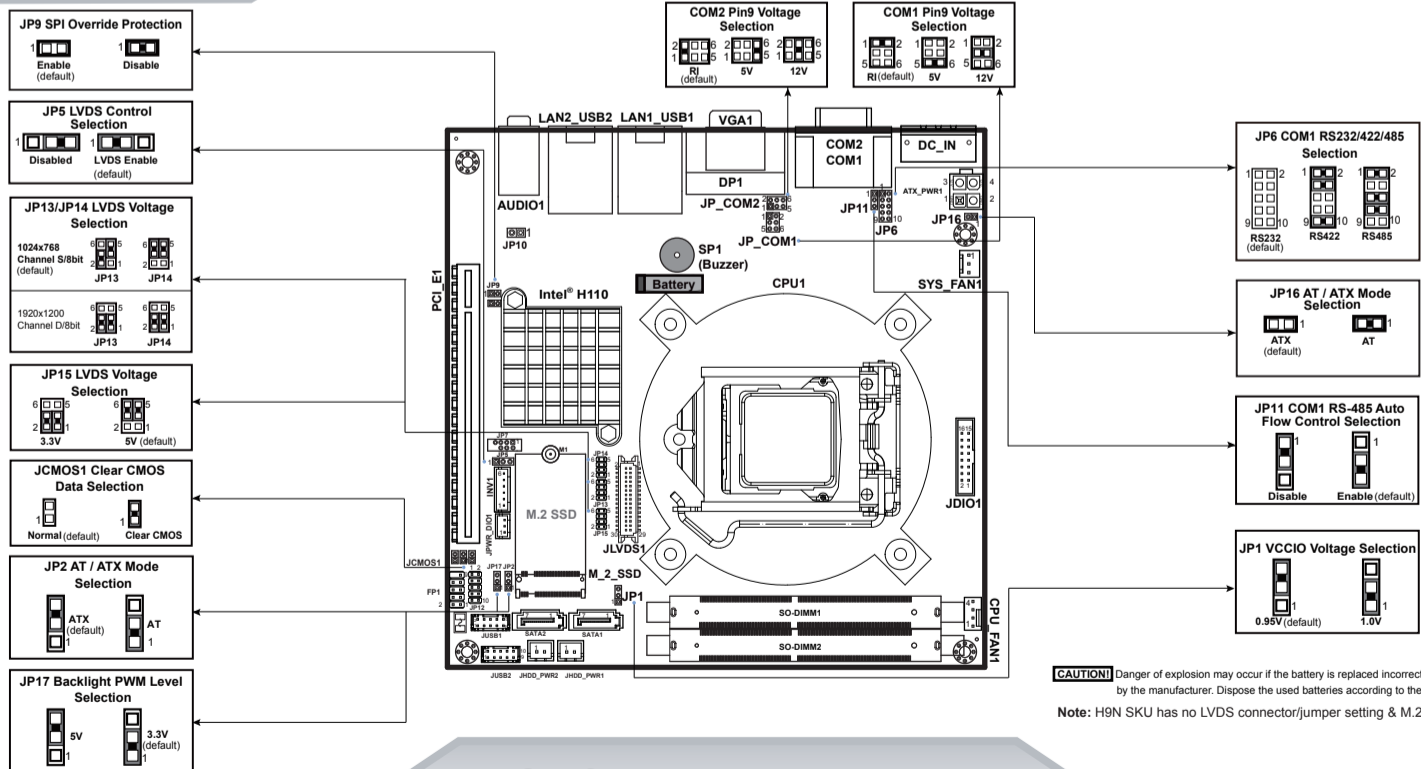


Installing Wall Mount



Jumper Setting

M/B: BM-2503



CAUTION! Danger of explosion may occur if the battery is replaced incorrectly. Replace batteries only with the same or equivalent type recommended by the manufacturer. Dispose the used batteries according to the manufacturer's instructions.
Note: H9N SKU has no LVDS connector/jumper setting & M.2 slot.

Safety Precaution

The following messages are reminders for safety on how to protect your system from damages and to extend a long life of the system.

1. Check the Cable Voltage

The range of operating voltage should be between DC 9V and 36V. Otherwise, the system could be damaged.

2. Environmental Conditions

- Place your KS-1132 on a sturdy, level surface. Be sure to allow enough space to have easy access around the system.
- Avoid extremely hot or cold place to install the system.
- Avoid exposure to sunlight for a long period of time or in an airtight space.
- Avoid the system from any heating device or using KS-1132 when it's been left outdoors in a cold winter day.
- Bear in mind that the operating ambient temperature is from 0°C ~ 35°C (32°F ~ 95°F).
- Avoid moving the system rapidly from a hot place to a cold place and vice versa because condensation may come from inside of the system.
- Placing KS-1132 in strong vibrations may cause hard disk failure.
- Don't place the system close to any radio-active device in case of signal interference.

3. Handling

- Avoid putting heavy objects on top of the system.

- Do not turn the system upside down. This may cause the hard drive to mal-function.
- If water or other liquid spills into this product, unplug the power cord immediately.

4. Good Care

- When the outside of the case is stained, remove the stain with a neutral washing agent with a dry cloth.
- Never use strong agents such as benzene and thinner to clean the system.
- If heavy stains are present, moisten a cloth with diluted neutral washing agent or with alcohol and then wipe thoroughly with a dry cloth.
- If dust has been accumulated on the outside, remove it by using a special made vacuum cleaner for computers.

CAUTION! Danger of explosion if battery is incorrectly replaced. Replace only with the same or equivalent type recommended by the manufacturer. Dispose of used batteries according to the manufacturer's instructions.

WARNING! Some internal parts of the system may have high electrical voltage. And therefore we strongly recommend that qualified engineers can open and disassemble the system. Please handle LCD and Touchscreen with extra care as they are easily breakable.